

535 WEST 22ND STREET NEW YORK NEW YORK 10011 212 247.2111 DCMOOREGALLERY.COM

ERIC AHO WILDERNESS STUDIO

October 15 – November 14, 2015

Opening Reception:

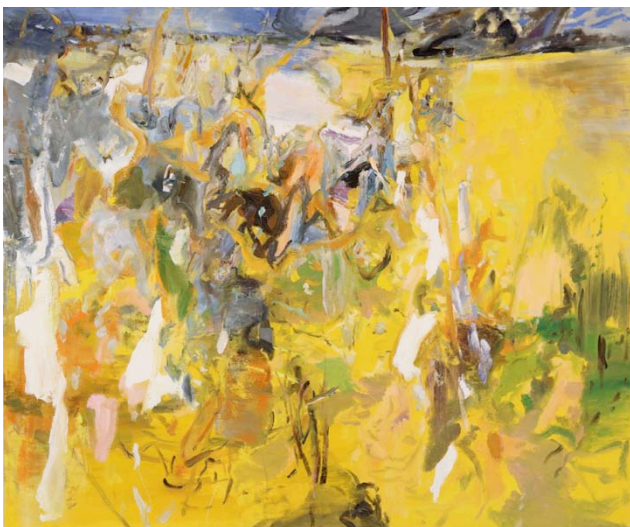
October 15
6:00 – 8:00 PM



Father's Birthday, 2015. Oil on linen, 48 x 50 in.

DC Moore Gallery is pleased to present *Wilderness Studio*, an exhibition of new work by Eric Aho that uses the painterly languages of representation and abstraction to explore the lived, remembered, and imagined experience of landscape. A catalogue with an essay by Nathan Kernan accompanies the exhibition.

For Aho, the most compelling “wilderness” is that encountered in paint on canvas. Premised on the visual pleasures and powers of painting, his work reconstitutes the observed outer world from the perspective of a personal interior. Memory, stories, and observations vie for primacy on Aho’s new surfaces, suggesting glimpsed fragments of mountains, fields, water, and woods amidst the extremes of changing seasons. The paintings, which are often large, evoke an uncanny familiarity of place and shared experience through strong color, ambiguities of space, and dynamic mark making. Kernan writes: “the paintings evoke a sense of mystery, pregnancy, of things about to happen, or having just happened; of what is missing, or is hiding in plain sight.”



Figures in a Landscape, 2015. Oil on linen, 50 x 60 in.

Aho’s engagement with landscape is informed by an interest in the people and histories with which it is intertwined. A visit to the remote atelier of Finnish painter Akseli Gallen-Kallela (1865-1931) sparked his interest in the metaphor of the wilderness studio. Aho relates, “the forest was his subject, and also the material for his studio. He lived in the middle of his work. The studio became symbolic of an imaginative container.” Paintings such as *Logging Road* (2015) and *Unorganized Territory (Lake)* (2015) allude to past and present realities of rural industry and politics in New England. Other works, like *General Desrousseaux* (2014), *Sundial* (2014), and *Figures in a Landscape* (2015), evolved from Aho’s ongoing project and his 2014 journey through the French countryside, retracing the route his father followed as an American soldier in World War II.

In 2016, exhibitions of Eric Aho’s work will be on view at the Hood Museum of Art in Hanover, NH and the New Britain Museum of American Art, CT. Recent shows of his painting include *Eric Aho: In the Landscape* at the Federal Reserve Board, Washington, DC (2013) and *Transcending Nature: Paintings by Eric Aho* at the Currier Museum of Art, Manchester, NH (2012). His work is included in the permanent collections of The Metropolitan Museum of Art, New York; Fine Arts Museums of San Francisco, CA; Museum of Fine Arts, Boston, MA; National Academy Museum, New York; Hood Museum of Art, Hanover, NH, and the Currier Museum of Art, Manchester, NH, among many others. Aho’s work has been shown internationally in Ireland, South Africa, Cuba, Norway, and Finland. He was elected Academician of the National Academy in 2009. Aho lives and works in Saxtons River, Vermont.

DC MOORE GALLERY specializes in contemporary and twentieth-century art. The Gallery is open from Tuesday through Saturday from 10 am to 6 pm. For more information, for photographs, or to arrange a viewing, please call 212-247-2111 or email Lily Zhou at lzhou@dcmooregallery.com.